

Harry K. **WONG** & Rosemary T. **WONG**

THE FIRST DAYS OF SCHOOL

HOW TO BE AN EFFECTIVE TEACHER



WE TEACH YOU TO PLAN SO YOU CAN PLAN TO TEACH

ONLINE BOOK STUDY **SEPT 1 - NOV 9, 2025**
Plus two in-person meetings: **OCT 2 & NOV 6 6p-8p**
Registration \$150 (book not included) ***18 PDUS**

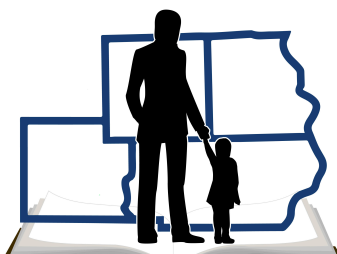
Facilitated by Roselene Quick, School Services Director

“As a teacher, you have an awesome responsibility. When students enter your classroom, you may be the only stable adult they will ever see in their lifetime. You are their hope, their dreams, and their advocate to realize their potential. The future depends on them, and they depend on you. A child only has one childhood. Don’t waste it. You are their best hope for a brighter tomorrow.”

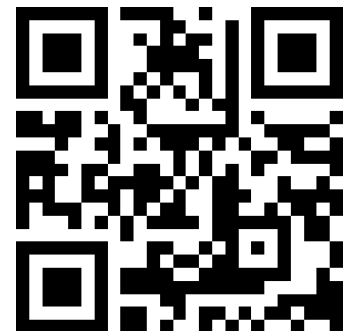
- Harry and Rosemary Wong

**In-person meetings located at:
ROE12 Robinson Office
300 W. Main St - Second Floor**

Regional Office of Education #12
Clay-Crawford-Jasper-Lawrence-Richland Counties
Jeremy Brush, Regional Superintendent of Schools



This year especially we need advocates as teachers ourselves. Join our book study to learn more about being an effective teacher, helping your students to reach their potential, and forming a network of support for your students and yourself.



Register: <https://tinyurl.com/3cm29bj5>